

**BILL OF MATERIAL (CURRENT LEVEL)**

ITEM	PT/ASSY	DESCRIPTION	TYPE	QTY.
1	1-016	ROMAN TUB QUICK DISCONNECT	ASSEMBLY	1
2	1-612	R/T LONG STEM ASM - HT	ASSEMBLY	1
3	1-613	R/T LONG STEM ASM - CD	ASSEMBLY	1
4	5-011	MOUNTING HDW FOR DECK FLANGE	ASSEMBLY	1
5	1-714	R/T VALVE DIVERTER	ASSEMBLY	1
6	12302-XX61	HOSE, 36 INCHES	ASSEMBLY	1

**NOTES:**

(NI) 1. FIT / FORM / FUNCTION SHALL FOLLOW PS-E.008.

ZONE	REV	DESCRIPTION	DATE	APPROVED
-	B	EN-3222E	11/23/17	J.A.
-	A	EO-0775	12/01/06	-
-	-	RELEASED	3/02	-

COPYRIGHT 2005 BRASSTECH, INC. THESE DRAWINGS AND THE DESIGNS DEPICTED HEREIN ARE THE PROPRIETARY PROPERTY OF BRASSTECH. ANY USE OR REPRODUCTION IS SUBJECT TO THE EXPRESS APPROVAL OF BRASSTECH. UNAUTHORIZED USE IS STRICTLY PROHIBITED. ALL RIGHTS RESERVED.

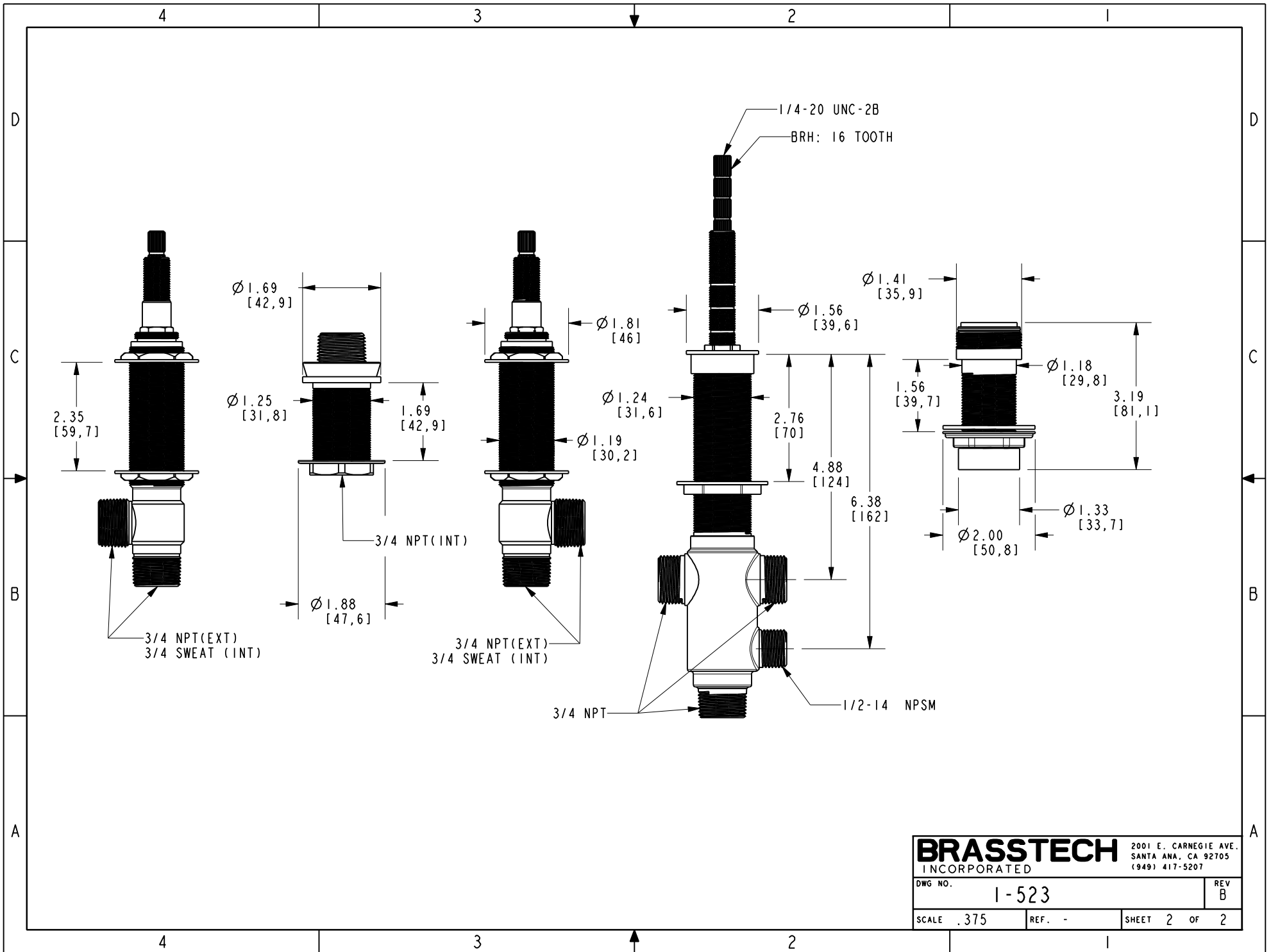
TESTING	ASSEMBLY	PLATING	POLISHING	MACHINING	TOOLING FIXTURE #	APPLICATION
-	-	-	-	-	-	REMOVE ALL BURRS AND SHARP EDGES

UNITS ARE: INCHES [MM]  
 TOLERANCES ARE:  
 FRACTIONS DECIMALS ANGLES  
 $\pm 1/16"$  .X  $\pm .1$  [2.5]  $\pm 1^\circ$   
 .XX  $\pm .06$  [1.5]  
 (X.XXX) DENOTES CRITICAL DIMS.  
 ALL THREADS ARE CRITICAL  
 DRAWN JINSON 11/23/17  
 CHECKED J.A. 11/23/17  
 APPROVED J.A. 11/23/17

**BRASSTECH** 2001 CARNEGIE AVE. SANTA ANA, CA 92705 (949) 417-5207  
 INCORPORATED

R/T 3 VALVE ROUGH LONG ST

DWG NO. 1-523 REV B  
 SCALE .250 REF. - SHEET 1 OF 2



<b>BRASSTECH</b>		2001 E. CARNEGIE AVE. SANTA ANA, CA 92705 (949) 417-5207	
INCORPORATED			
DWG NO.	1-523	REV	B
SCALE .375	REF. -	SHEET 2	OF 2