

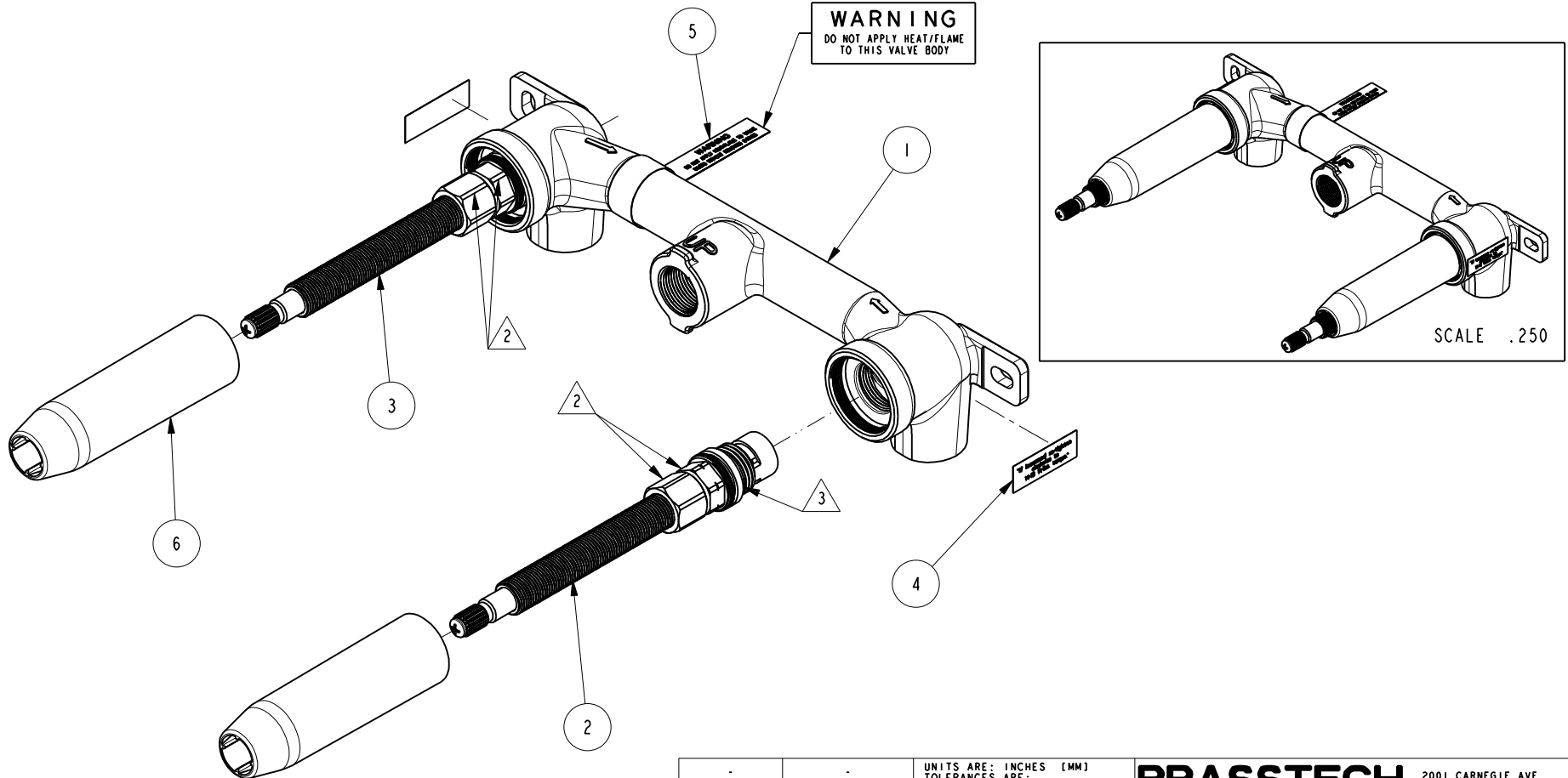
NOTES:

- (N1) 1. FIT / FORM / FUNCTION SHALL FOLLOW PS-E.008.
- △ 2. TORQUE TO 15-20 FT-LBS.
- △ 3. APPLY A THIN LAYER OF DOW CORNING OIL 200.
- 4. IF CARTRIDGE STEM LENGTH IS TOO SHORT, OPTIONAL STEM EXTENSION KIT #1-384 CAN BE PURCHASED TO EXTEND STEM LENGTH.

BILL OF MATERIAL (CURRENT LEVEL)

| ITEM | PT/ASSY | DESCRIPTION | TYPE | QTY. |
|------|---------|----------------------------------|----------|------|
| 1 | 11989 | VALVE BODY, IN-WALL LAV 1/2" NPT | PART | 1 |
| 2 | 1-543 | T/S TORO. CARTRIDGE COLD | ASSEMBLY | 1 |
| 3 | 1-544 | T/S TORO. CARTRIDGE HOT | ASSEMBLY | 1 |
| 4 | 98029 | STICKER, 14-16 FT-LBS TORQUE | PART | 2 |
| 5 | 98042 | WARNING LABEL | PART | 1 |
| 6 | 91643 | MUD COVER, VALVE 1/2" | PART | 2 |

WARNING
DO NOT APPLY HEAT/FLAME
TO THIS VALVE BODY



| ZONE | REV | DESCRIPTION | DATE | APPROVED |
|------|-----|-------------|----------|----------|
| - | D | EN-3362 | 03/09/18 | C.G. |
| - | C | EN-3286 | 03/10/17 | V.V. |
| - | B | EN-3095a | 01/24/17 | V.V. |
| - | A | EN-2928 | 11/23/15 | V.V. |
| - | - | EN-2182 | 08/13/12 | - |

COPYRIGHT 2005 BRASSTECH, INC.
THESE DRAWINGS AND THE DESIGNS
DEPICTED HEREIN ARE THE PROPRIETARY
PROPERTY OF BRASSTECH. ANY USE
OR REPRODUCTION IS SUBJECT TO
THE EXPRESS APPROVAL OF BRASSTECH.
UNAUTHORIZED USE IS STRICTLY
PROHIBITED. ALL RIGHTS RESERVED.

| TESTING | ASSEMBLY | PLATING | POLISHING | MACHINING | TOOLING FIXTURE # | APPLICATION | APPROVED |
|---------|----------|---------|-----------|-----------|-------------------|----------------------------------|---------------|
| - | - | - | - | - | | REMOVE ALL BURRS AND SHARP EDGES | C.G. 03/09/18 |
| | | | | | | | C.G. 03/09/18 |

UNIT TOLERANCES ARE:
FRACTIONS DECIMALS ANGLES
 $\pm 1/16"$.X $\pm .1$ [2.5] $\pm 1"$
.XX $\pm .06$ [1.5]

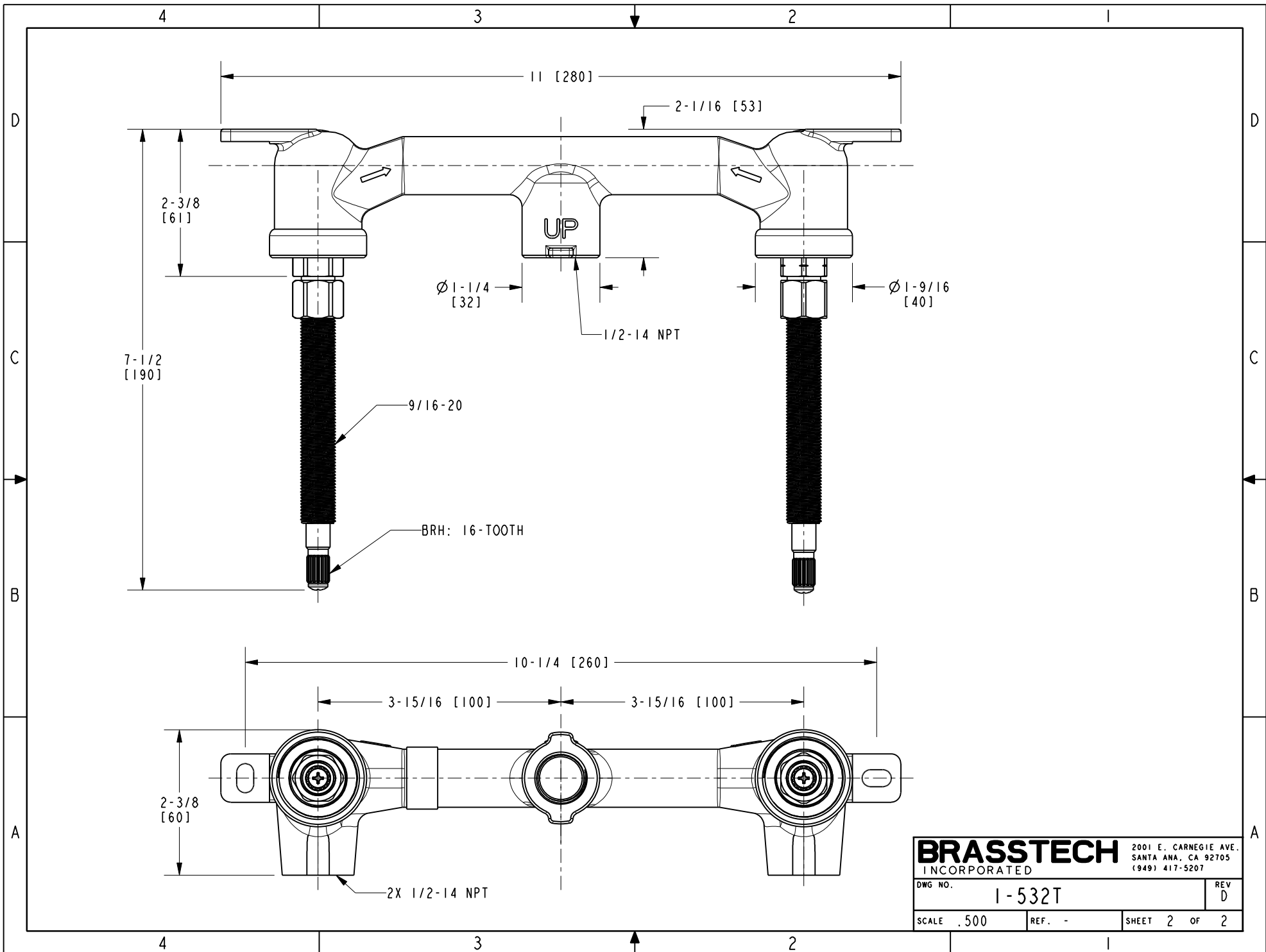
(X.XXX) DENOTES CRITICAL DIMS.
ALL THREADS ARE CRITICAL

BRASSTECH 2001 CARNEGIE AVE.
INCORPORATED SANTA ANA, CA 92705
(949) 417-5207

**IN-WALL LAV VALVE ROUGH,
HIGH TORQUE**

DWG NO. 1-532T REV D

SCALE .400 REF. - SHEET | OF 2



| | | | |
|------------------|--------|--|----------|
| BRASSTECH | | 2001 E. CARNEGIE AVE. SANTA ANA, CA 92705 (949) 417-5207 | |
| DWG NO. | 1-532T | | REV D |
| SCALE .500 | REF. - | SHEET 2 OF 2 | |