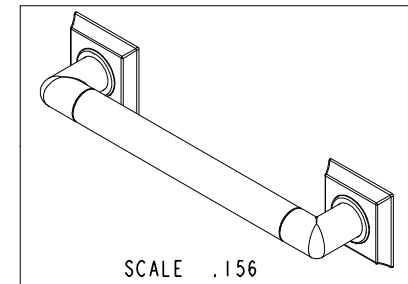
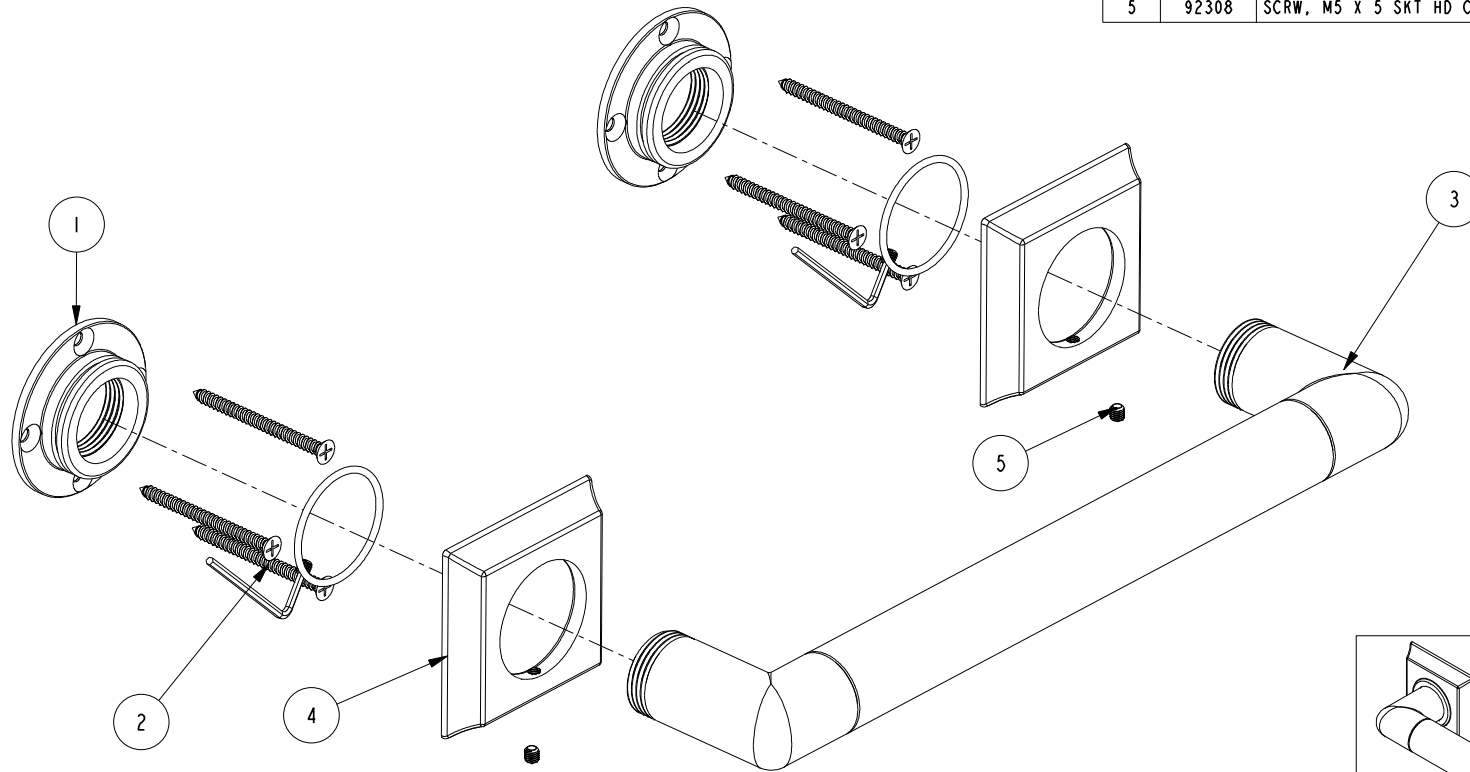


NOTES:

1. TO INSPECT ASSEMBLY, FOLLOW FIRST ARTICLE AND IN PROCESS INSPECTION SHEET.

BILL OF MATERIAL (CURRENT LEVEL)

ITEM	PT/ASSY	DESCRIPTION	TYPE	QTY.
1	1995	MOUNTING FLANGE	PART	2
2	199X	GRAB BAR MOUNTING HARDWARE PACK	ASSEMBLY	2
3	5080SQ	12" GRAB BAR BRAZE ASM	ASSEMBLY	1
4	40677	DECORATIVE RING	PART	2
5	92308	SCRW, M5 X 5 SKT HD CUP PT W/ SELF LOC SS	PART	2



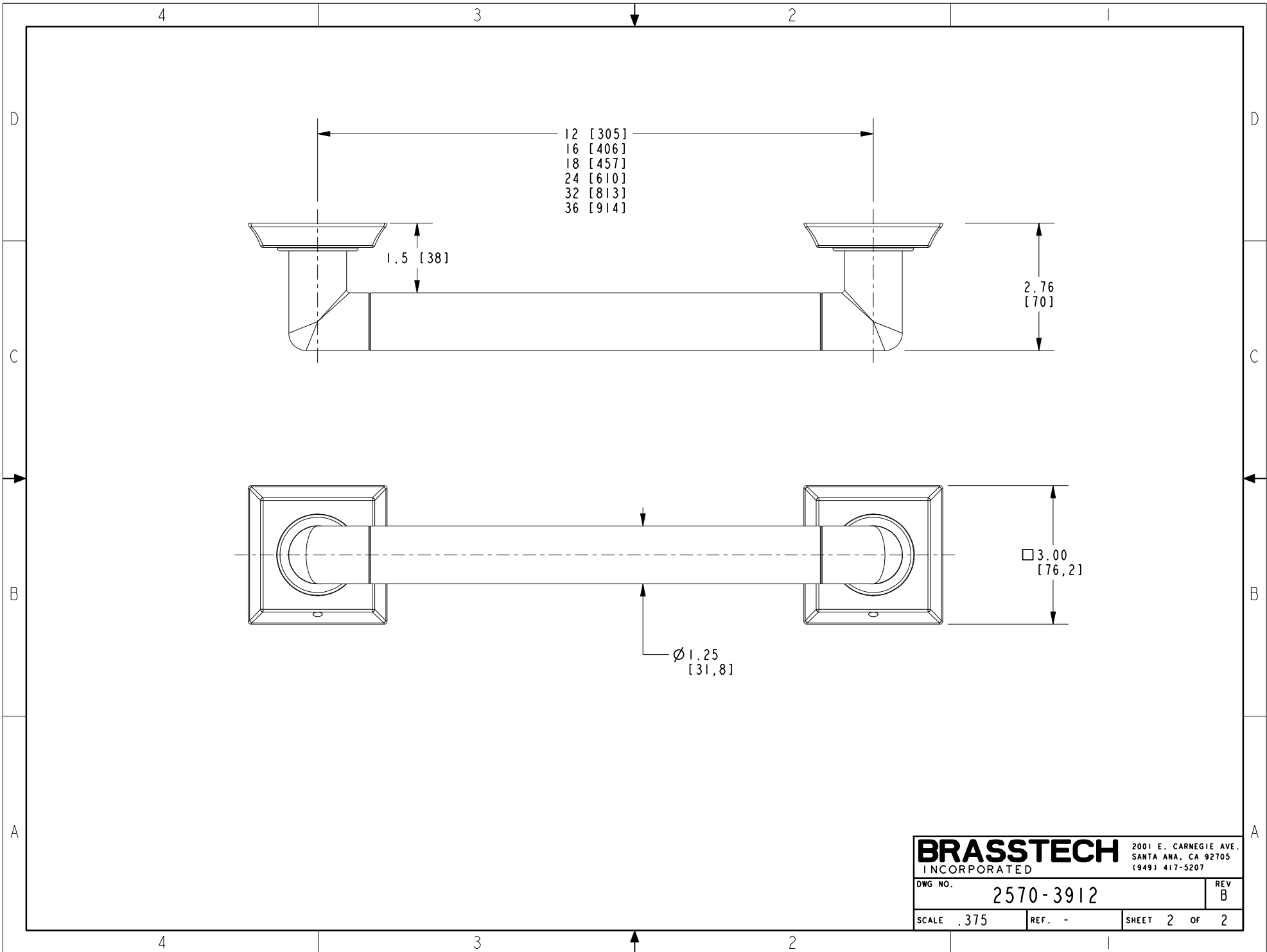
ZONE	REV	DESCRIPTION	DATE	APPROVED	TESTING	ASSEMBLY	PLATING	POLISHING	MACHINING	TOOLING FIXTURE #	APPLICATION
-	B	EN-4300i	06/15/21	J.M.	-	-	-	-	-	-	-
-	A	EN-4143	03/20/20	J.M.	-	-	-	-	-	-	-
-	-	EN-3279b	07/03/17	J.M.	-	-	-	-	-	-	-
COPYRIGHT 2005 BRASSTECH, INC. THESE DRAWINGS AND THE DESIGNS DEPICTED HEREIN ARE THE PROPRIETARY PROPERTY OF BRASSTECH. ANY USE OR REPRODUCTION IS SUBJECT TO THE EXPRESS APPROVAL OF BRASSTECH. UNAUTHORIZED USE IS STRICTLY PROHIBITED. ALL RIGHTS RESERVED.					-	-	-	-	-	-	-
					TESTING	-	-	-	-	-	-
					ASSEMBLY	-	-	-	-	-	-
					PLATING	-	-	-	-	-	-
					POLISHING	-	-	-	-	NEXT ASSY	USED ON
					MACHINING	-	-	-	-	APPLICATION	
					TOOLING FIXTURE #	-	-	-	-	REMOVE ALL BURRS AND SHARP EDGES	

UNITS ARE: INCHES [MM]		
TOLERANCES ARE:		
FRACTIONS	DECIMALS	ANGLES
±1/16"	.X ±.1 [2.5]	±1°
	.XX ±.06 [1.5]	
(X.XXX) DENOTES CRITICAL DIMS. ALL THREADS ARE CRITICAL		
DRAWN	VINAY	04/10/17
CHECKED	RAVINDRA	04/10/17
APPROVED	J.M	04/10/17

BRASSTECH 2001 CARNEGIE AVE. SANTA ANA, CA 92705 (949) 417-5207
INCORPORATED

GRAB BAR 12"

DWG NO.	2570-3912	REV	B
SCALE	.375	REF.	-
SHEET	1	OF	2



BRASSTECH		2001 E. CARNEGIE AVE. SANTA ANA, CA 92705 (949) 417-5207
DWG NO.	2570-3912	REV B
SCALE	.375	REF. - SHEET 2 OF 2