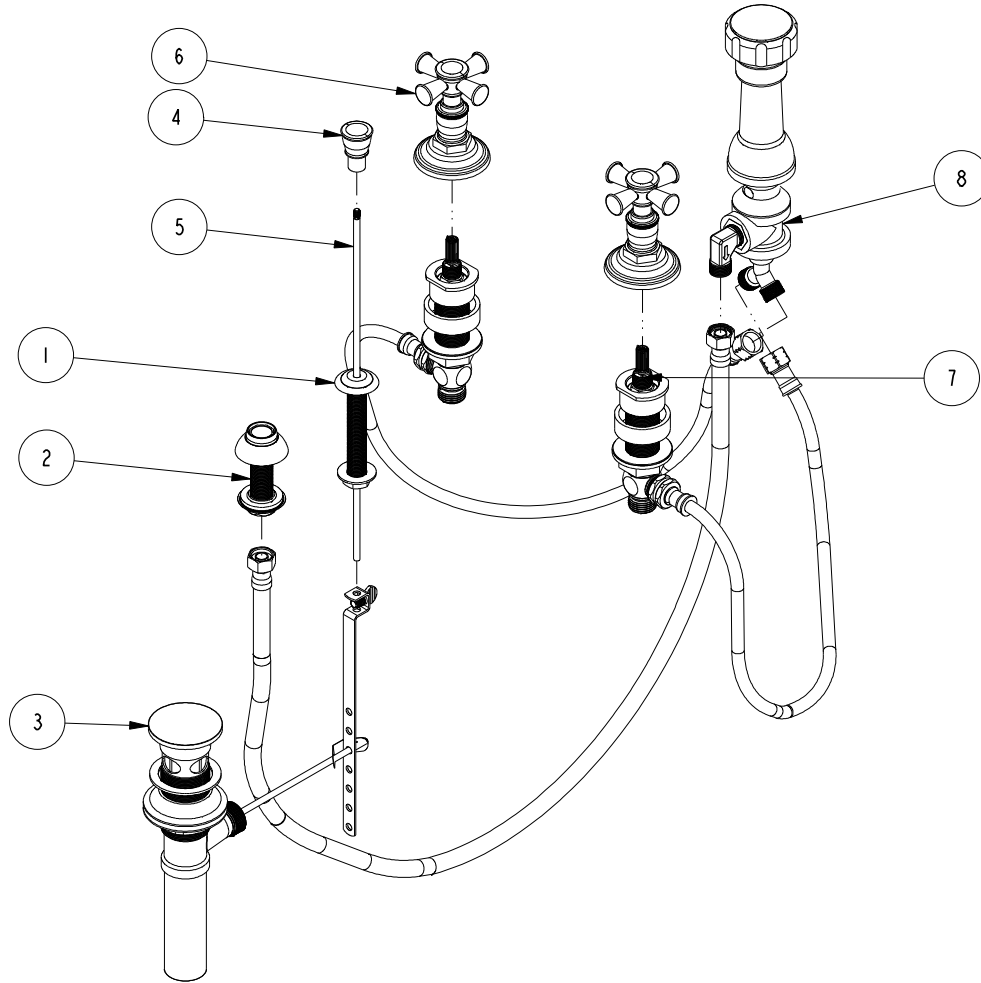


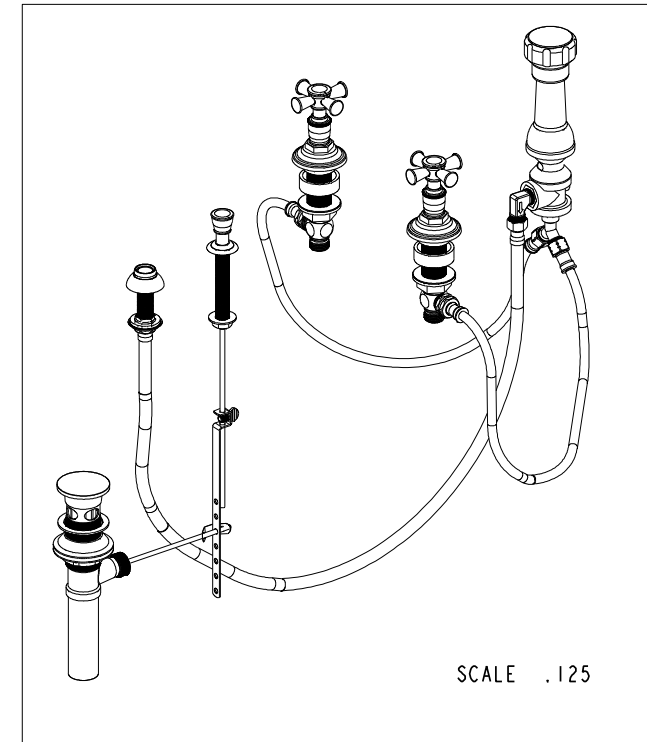
NOTES:

1. TO INSPECT ASSEMBLY, FOLLOW FIRST ARTICLE AND IN PROCESS INSPECTION SHEET.



BILL OF MATERIAL (CURRENT LEVEL)

ITEM	PT/ASSY	DESCRIPTION	TYPE	QTY.
1	2-159	POP-UP ROD GUIDE ASSEMBLY	ASSEMBLY	1
2	2-236	DOUCHE SPRAY ASSEMBLY	ASSEMBLY	1
3	325	POP UP ASSEMBLY	ASSEMBLY	1
4	12372	BONNET	PART	1
5	10288	3/16" POP UP ROD	PART	1
6	3-562	CROSS HANDLE W/ESC.	ASSEMBLY	2
7	1-667	VALVE KIT ASSEMBLY	ASSEMBLY	1
8	2-235	BIDET DIVERTER / V. BRE	ASSEMBLY	1



TESTING	-	-	-
ASSEMBLY	-	-	-
PLATING	-	-	-
POLISHING	-	NEXT ASSY	USED ON
MACHINING	-	APPLICATION	
TOOLING FIXTURE #	REMOVE ALL BURRS AND SHARP EDGES		

UNITS ARE: INCHES [MM]
 TOLERANCES ARE:
 FRACTIONS DECIMALS ANGLES
 $\pm 1/16"$.X $\pm .1$ [2.5]
 .XX $\pm .06$ [1.5]
 (X.XXX) DENOTES CRITICAL DIMS.
 ALL THREADS ARE CRITICAL
 DRAWN JINSON 01/08/21
 CHECKED R.S. 01/08/21
 APPROVED R.S. 01/08/21

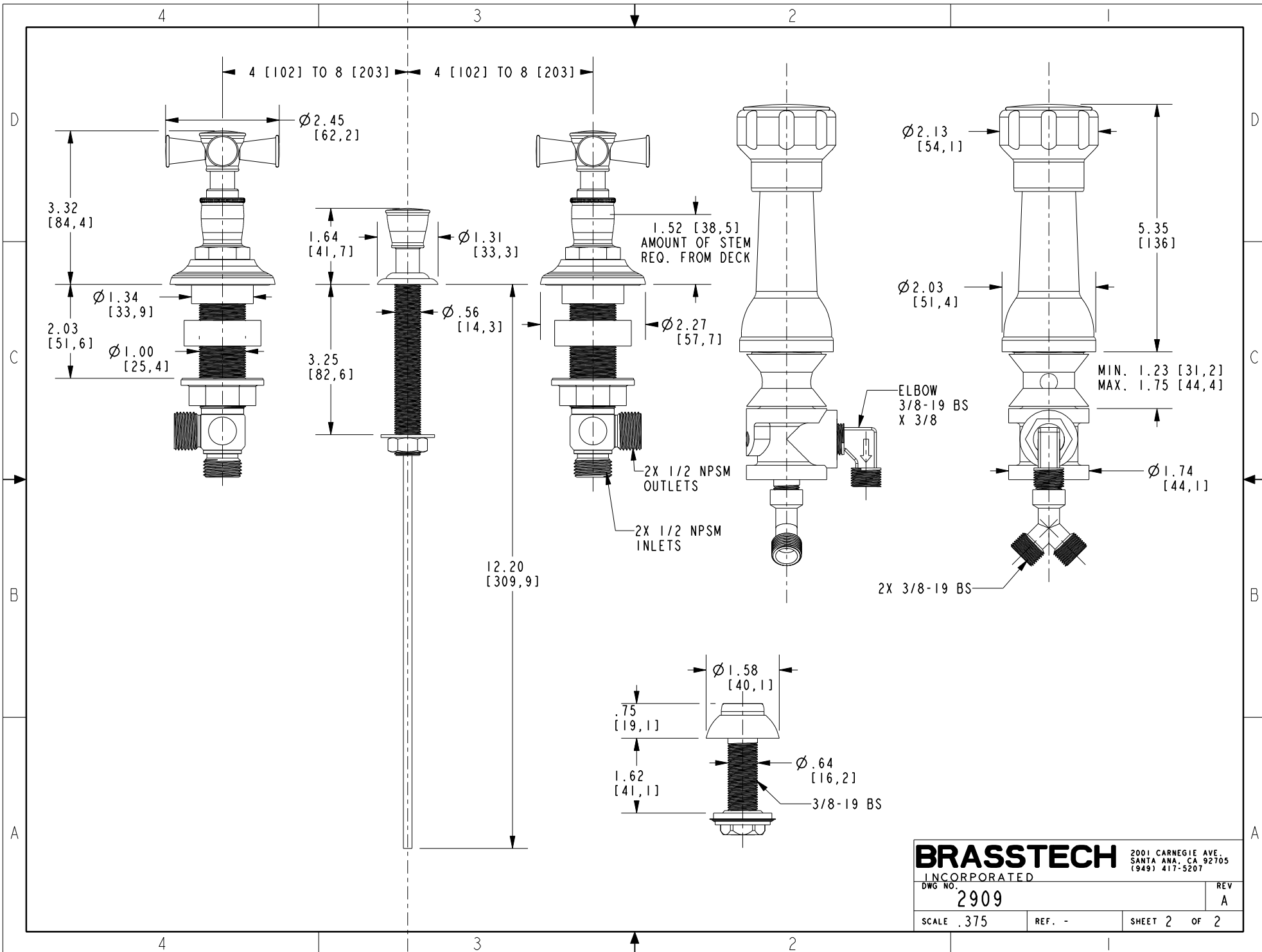
BRASSTECH 2001 CARNEGIE AVE.
 INCORPORATED SANTA ANA, CA 92705
 (949) 417-5207

BOTTOM SPRAY BIDET, CROSS HANDLE

DWG NO. **2909** REV **A**
 SCALE .175 REF. - SHEET 1 OF 2

COPYRIGHT 2005 BRASSTECH, INC.
 THESE DRAWINGS AND THE DESIGNS
 DEPICTED HEREIN ARE THE PROPRIETARY
 PROPERTY OF BRASSTECH. ANY USE
 OR REPRODUCTION IS SUBJECT TO
 THE EXPRESS APPROVAL OF BRASSTECH.
 UNAUTHORIZED USE IS STRICTLY
 PROHIBITED. ALL RIGHTS RESERVED.

-	A	EN-4300c	01/08/21	R.S.
-	-	EN-2838c	08/10/15	J.M.
ZONE	REV	DESCRIPTION	DATE	APPROVED



BRASSTECH
 INCORPORATED
 2001 CARNEGIE AVE.
 SANTA ANA, CA 92705
 (949) 417-5207

DWG NO.	REV
2909	A
SCALE .375	REF. -
SHEET 2	OF 2