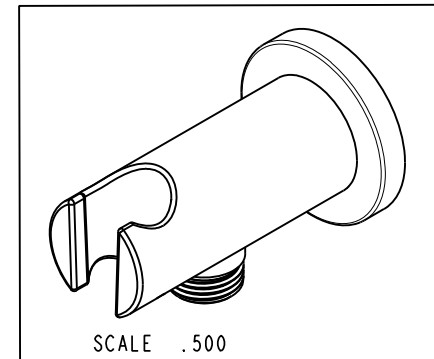
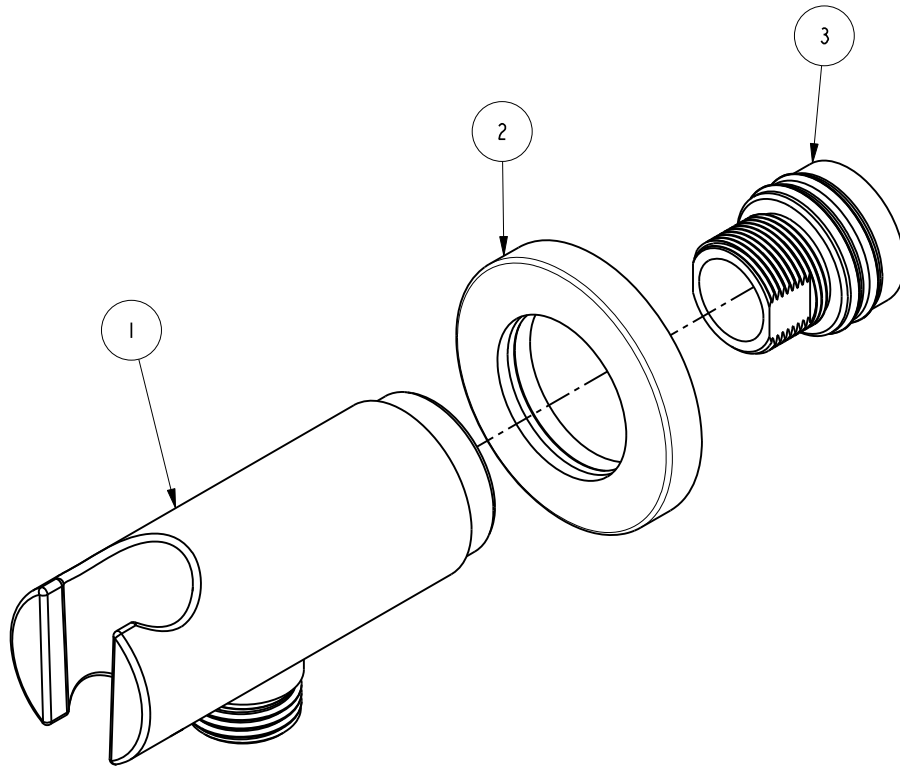


NOTES:

1. FIT / FORM / FUNCTION SHALL FOLLOW PS-E.008.

BILL OF MATERIAL (CURRENT LEVEL)

ITEM	PT/ASSY	DESCRIPTION	TYPE	QTY.
1	20-386	SUPPLY ELBOW ASM - CONTEMPORARY	ASSEMBLY	1
2	20-385	ESCUTCHEON ASM	ASSEMBLY	1
3	1-368	WALL MOUNT SPOUT ADAPTOR ASM	ASSEMBLY	1



UNITS ARE: INCHES [MM]  
 TOLERANCES ARE:  
 FRACTIONS DECIMALS ANGLES  
 ±1/16" .X ±.1 [2.5] ±1°  
 .XX ±.06 [1.5]  
 (X.XXX) DENOTES CRITICAL DIMS.  
 ALL THREADS ARE CRITICAL

**BRASSTECH** 2001 CARNEGIE AVE.  
 INCORPORATED SANTA ANA, CA 92705  
 (949) 417-5207

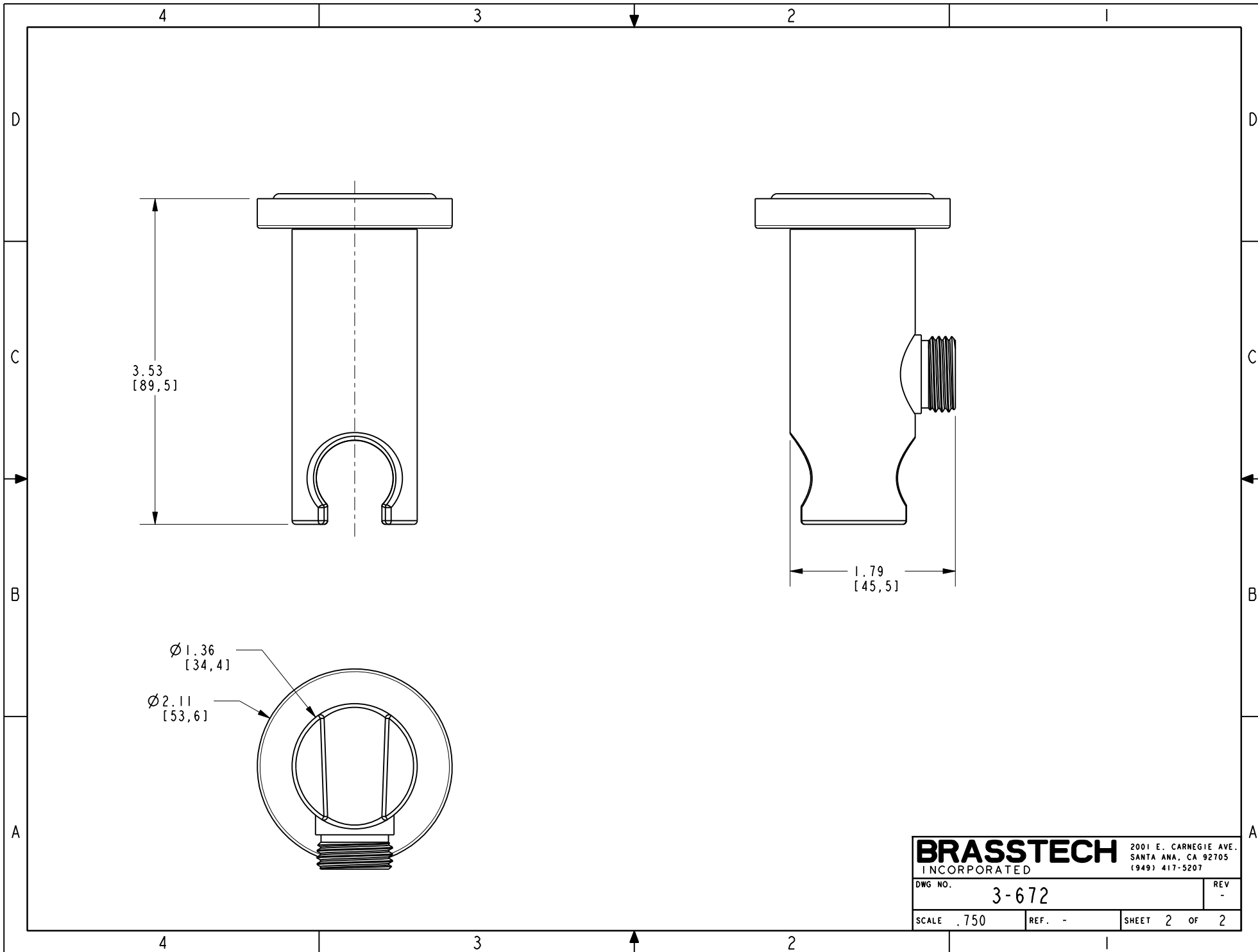
SUPPLY ELBOW ASM.

DWG NO. 3-672 REV -  
 SCALE .750 REF. - SHEET 1 OF 2

COPYRIGHT 2005 BRASSTECH, INC.  
 THESE DRAWINGS AND THE DESIGNS  
 DEPICTED HEREIN ARE THE PROPRIETARY  
 PROPERTY OF BRASSTECH. ANY USE  
 OR REPRODUCTION IS SUBJECT TO  
 THE EXPRESS APPROVAL OF BRASSTECH.  
 UNAUTHORIZED USE IS STRICTLY  
 PROHIBITED. ALL RIGHTS RESERVED.

TESTING	-	-	-	-
ASSEMBLY	-	-	-	-
PLATING	-	280R	280R	-
POLISHING	-	NEXT ASSY	USED ON	-
MACHINING	-	APPLICATION		-
TOOLING FIXTURE #	-	REMOVE ALL BURRS AND SHARP EDGES		-

ZONE	REV	DESCRIPTION	DATE	APPROVED
-	-	EN-3900	06/26/19	J.M.



<b>BRASSTECH</b>		2001 E. CARNEGIE AVE.	
INCORPORATED		SANTA ANA, CA 92705	
DWG NO. 3-672		REV -	
SCALE .750	REF. -	SHEET 2 OF 2	