

4

3

2

NOTES:

(N1) 1. FIT / FORM / FUNCTION SHALL FOLLOW PS-E.008.

2 AFFIX LABEL # 98137, ITEM 6, APPROX. WHERE SHOWN.

BILL OF MATERIAL (CURRENT LEVEL)

ITEM	PT/ASSY	DESCRIPTION	TYPE	QTY.
1	20-274	SHOWER PLATE ASM	ASSEMBLY	1
2	3-536	SHOWER ARM	ASSEMBLY	1
3	3-496	HANDLE ASM	ASSEMBLY	1
4	3-504	SHOWER HEAD ASM	ASSEMBLY	1
5	CCQT0002	HEX KEY	PART	1
6	98137	LABEL	PART	1

D

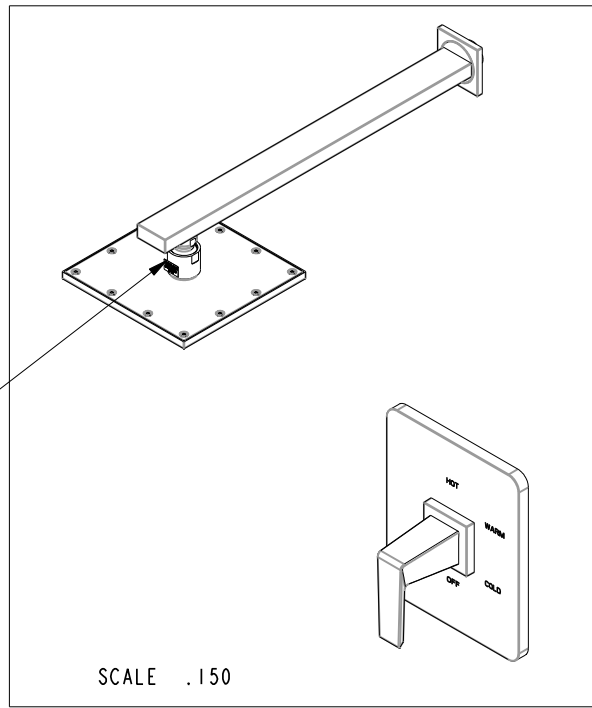
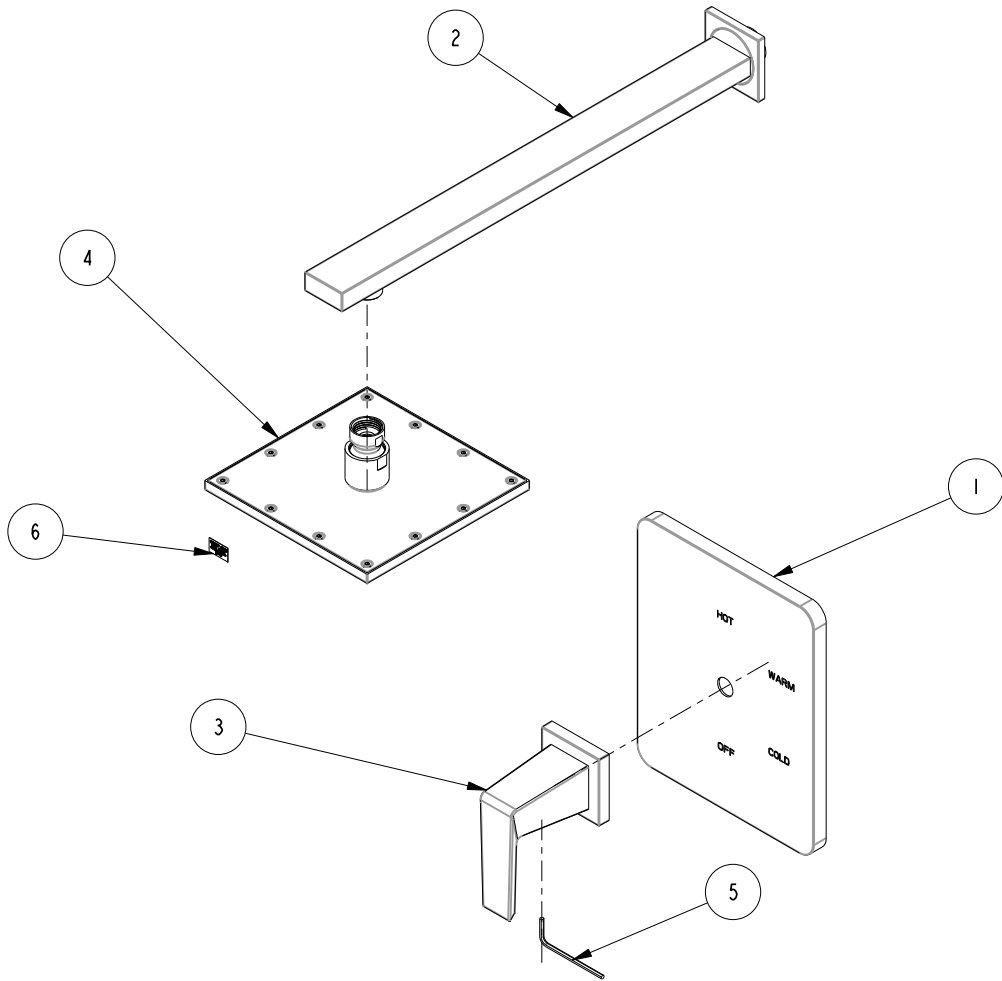
D

C

C

B

B



A

A

ZONE	REV	DESCRIPTION	DATE	APPROVED
-	D	EN-3770	12/18/18	NS
-	C	EN-3260	02/16/17	NS
-	B	EN-2892	05/22/15	V. VU
-	A	EN-2889	05/11/15	V. VU
-	-	EN-2741	08/27/14	V. VU

COPYRIGHT 2005 BRASSTECH, INC. THESE DRAWINGS AND THE DESIGNS DEPICTED HEREIN ARE THE PROPRIETARY PROPERTY OF BRASSTECH. ANY USE OR REPRODUCTION IS SUBJECT TO THE EXPRESS APPROVAL OF BRASSTECH. UNAUTHORIZED USE IS STRICTLY PROHIBITED. ALL RIGHTS RESERVED.

TESTING	-	-	-
ASSEMBLY	-	-	-
PLATING	-	-	-
POLISHING	-	NEXT ASSY	USED ON
MACHINING	-	APPLICATION	
TOOLING FIXTURE #	REMOVE ALL BURRS AND SHARP EDGES		

UNITS ARE: INCHES [MM]	
TOLERANCES ARE:	
FRACTIONS	DECIMALS
±1/16"	.X ±.1 [2,5]
	.XX ±.06 [1,5]
(X.XXX) DENOTES CRITICAL DIMS. ALL THREADS ARE CRITICAL	
DRAWN	H. LE 08/27/14
CHECKED	V. VU 08/27/14
APPROVED	V. VU 08/27/14

BRASSTECH 2001 CARNEGIE AVE. SANTA ANA, CA 92705 (949) 417-5207
INCORPORATED

BP SHOWER TRIM SET

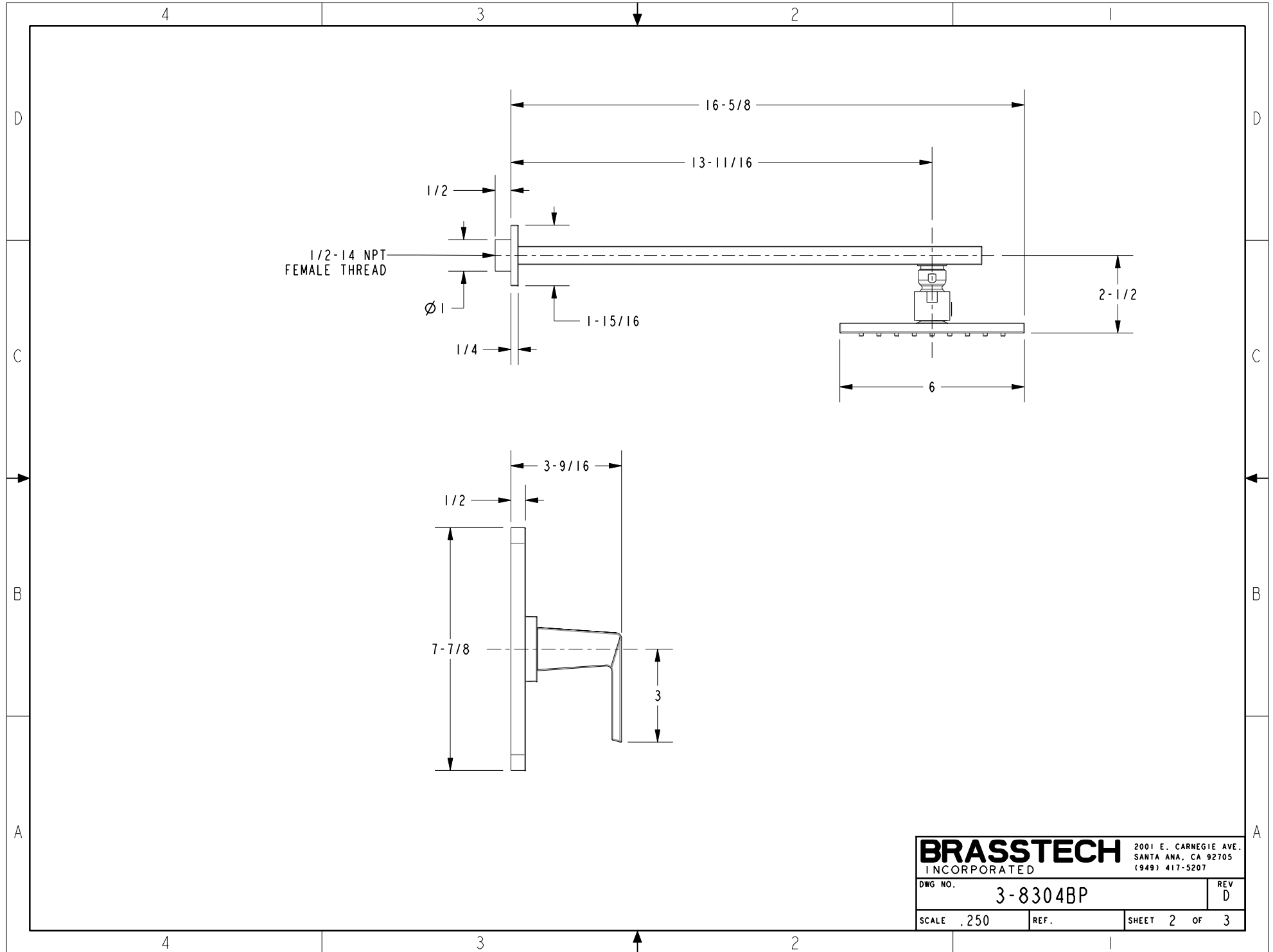
DWG NO.	3-8304BP	REV	D
SCALE	.200	REF.	
SHEET	1	OF	3

4

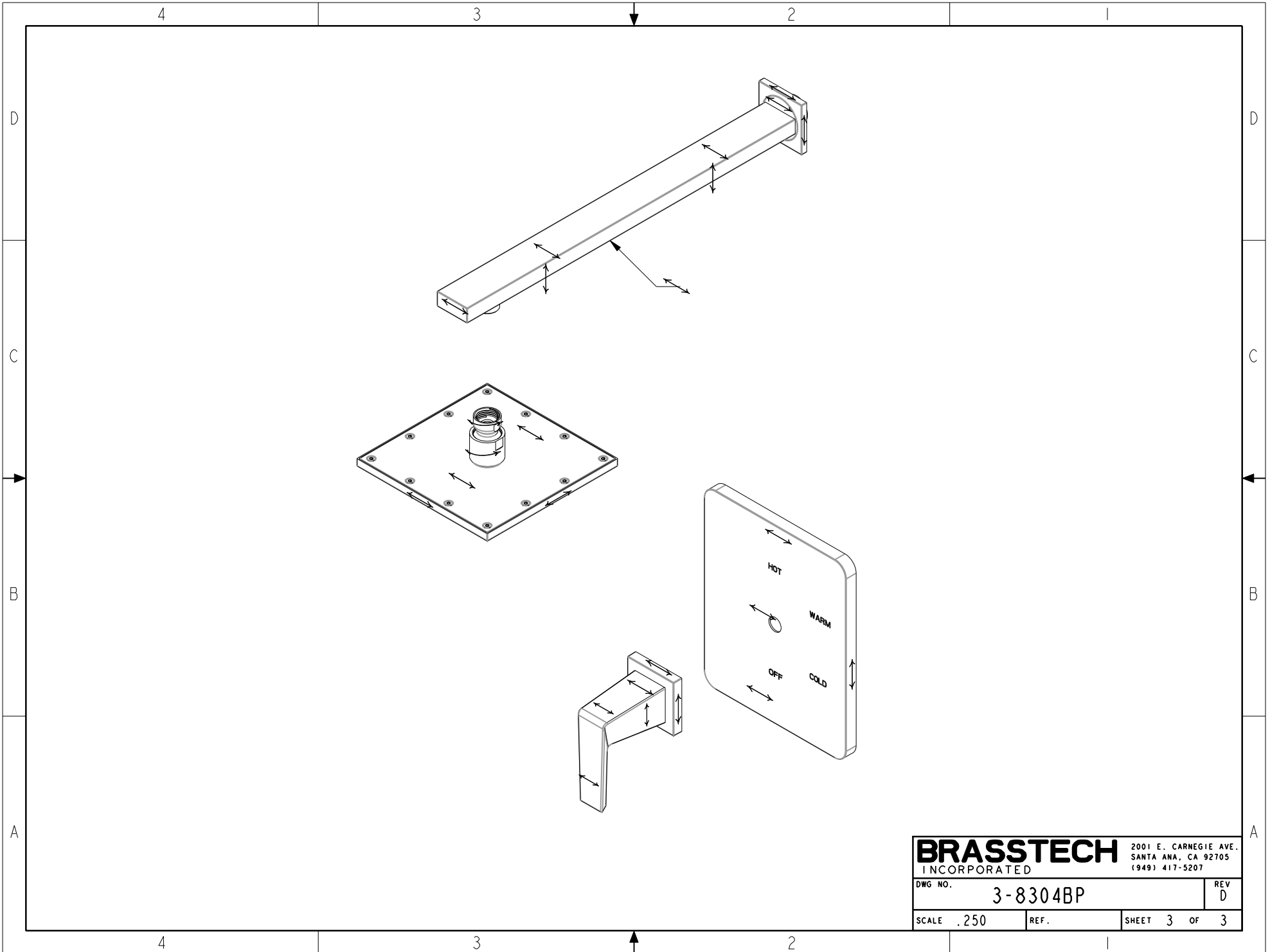
3

2

1



BRASSTECH		2001 E. CARNEGIE AVE.
INCORPORATED		SANTA ANA, CA 92705
		(949) 417-5207
DWG NO.	3-8304BP	REV D
SCALE .250	REF.	SHEET 2 OF 3



BRASSTECH		2001 E. CARNEGIE AVE.	
INCORPORATED		SANTA ANA, CA 92705	
		(949) 417-5207	
DWG NO.	3-8304BP		REV D
SCALE .250	REF.	SHEET 3 OF 3	