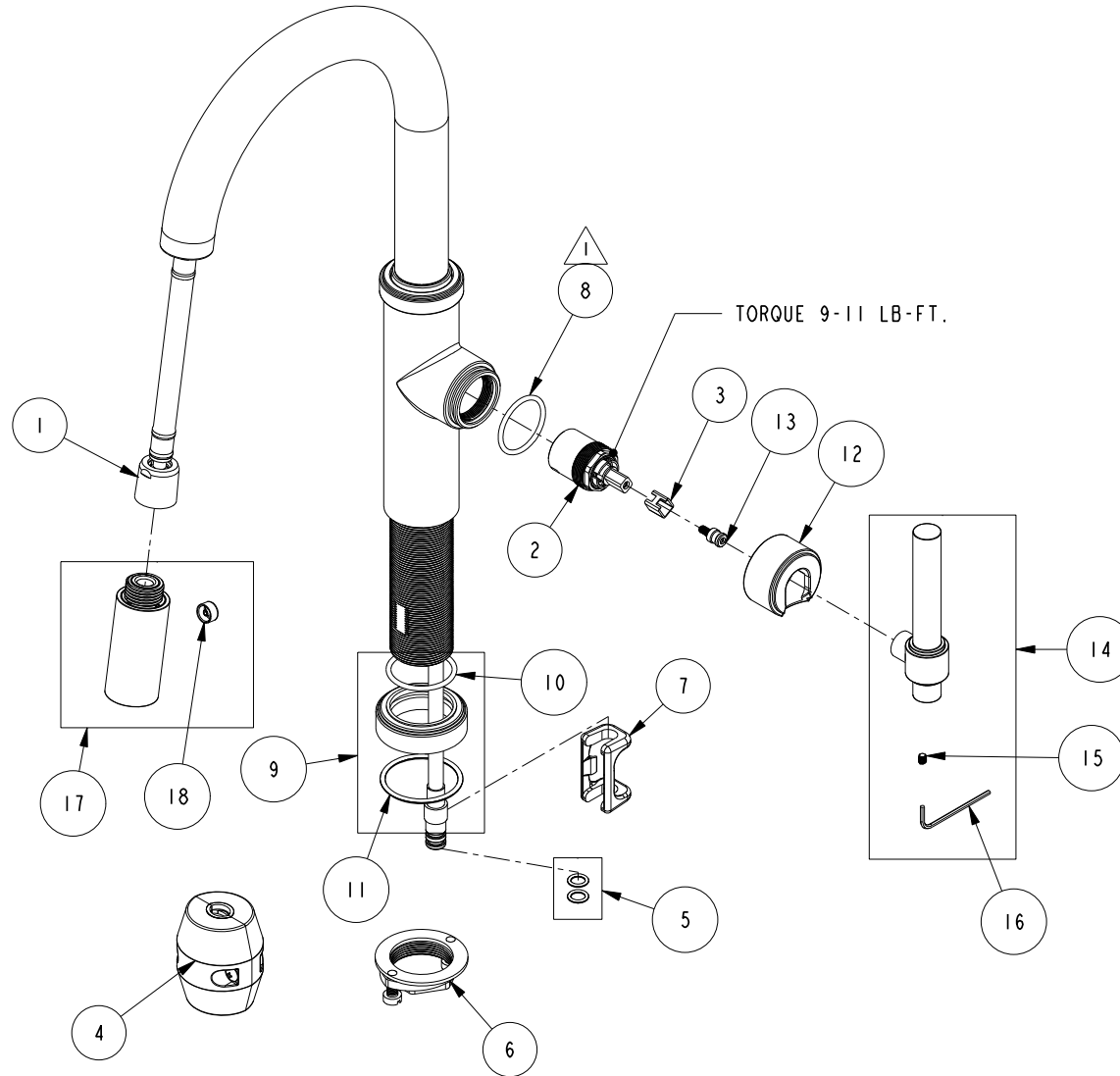


REPLACEMENT PARTS

NOTE:

1. USE SILICON GREASE (PART NUMBER 6727) TO LUBRICATE O-RINGS BEFORE INSTALL.

ITEM	PT/ASSY	SPECIFY FINISH	DESCRIPTION
1	11877A		HOSE, PULLDOWN, GREY
2	1-371		CARTRIDGE
3	91534		CARTRIDGE STEM INSERT
4	1-286A		WEIGHT
5	1-399		O-RING KIT FOR SPOUT PEX CONECTION
6	1-256		MOUNTING KIT
7	91568		RETAINER CLIP
8	91505		O-RING, #2-123, EPDM, 65-75 DURO
9	20-683	YES	ESCUTCHEON ASM
10	91227		O-RING, #2-125 EPDM
11	91763		O-RING, #2- 129, EP, 50 DURO - GREY
12	13838	YES	25MM PULLDOWN HUB
13	11874		HANDLE ADAPTER SCREW
14	20-320	YES	HANDLE LEVER ASM
15	92001		SCRW, 8-32 X 3/16 SKT HD FLT PT SS
16	10192		HEX KEY TOOL, #8 5/64
17	3-480	YES	SPRAY HEAD, EAST LINEAR
18	13975		BUTTON



Prep/Bar Pull Down Faucet
3180-5243

REV B EN-4830-1 06/17/24

NEWPORT BRASS.

t: 949.417.5207 | www.newportbrass.com