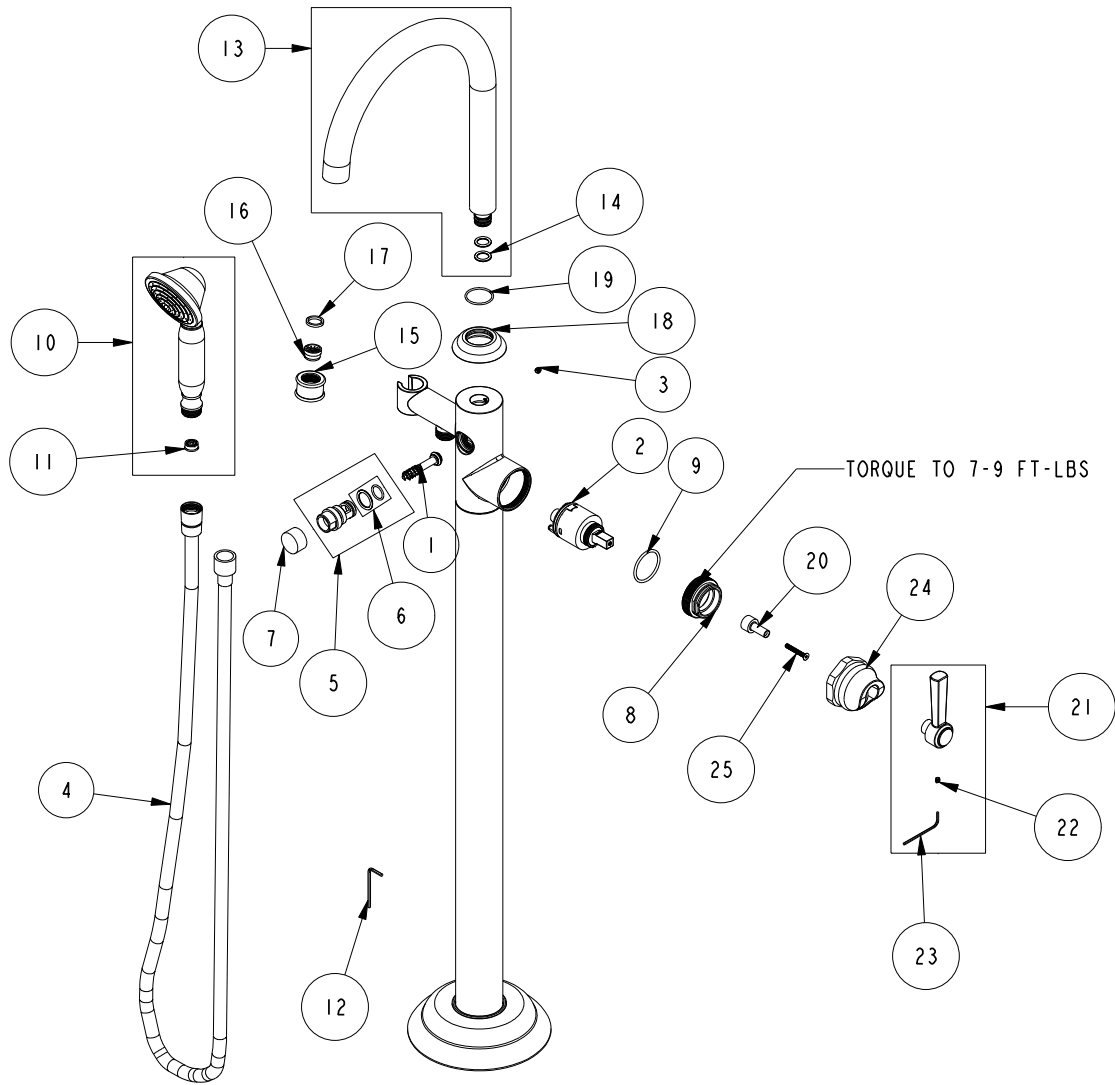


REPLACEMENT PARTS



ITEM	PT/ASSY	SPECIFY FINISH	DESCRIPTION
1	20-259		DIVERTER ASM
2	1-292		CARTRIDGE
3	92308		SCRW, M5 X 5 SKT HD CUP PT SS
4	284_		SHOWER HOSE
5	20-260	YES	DIVERTER HOUSING ASM
6	10-340		DIVERTER ASM O-RING KIT
7	12191	YES	DIVERTER BUTTON
8	13220		CARTRIDGE RETAINER
9	91227		O-RING, #2-125 EPDM
10	283-201	YES	HANDSHOWER ASM
11	12832		FLOW REGULATOR, 1.8 GPM MAX
12	10159		HEX KEY, 3/32 ALLOY STEEL
13	3-808	YES	SPOUT SUB ASM
14	91027		O-RING, #2- 112, EPDM, 65-75 DURO, NSF 61
15	13990	YES	FLOW STRAIGHTENER SHELL
16	91330		STREAM STRAIGHTENER JUNIOR
17	91500		GSKT, .578 ID X .728 OD X .102 THK EPDM
18	13987	YES	DECORATIVE COLLAR
19	91408		O-RING, #2-023, EPDM, 65-75 DURO
20	13984		ADAPTER
21	20-729	YES	HANDLE LEVER ASM.
22	92001		SCRW, 8-32 X 3/16 SKT HD FLT PT SS
23	10192		HEX KEY TOOL, #8 5/64
24	13989	YES	HANDLE BONNET
25	92487		SCRW, M4 X 30 SKT FLT HD CAP SS STL

TUB AND HANDSHOWER SET
910-4261

REV A EN-4823 06/12/24

NEWPORT BRASS.

t: 949.417.5207 | www.newportbrass.com