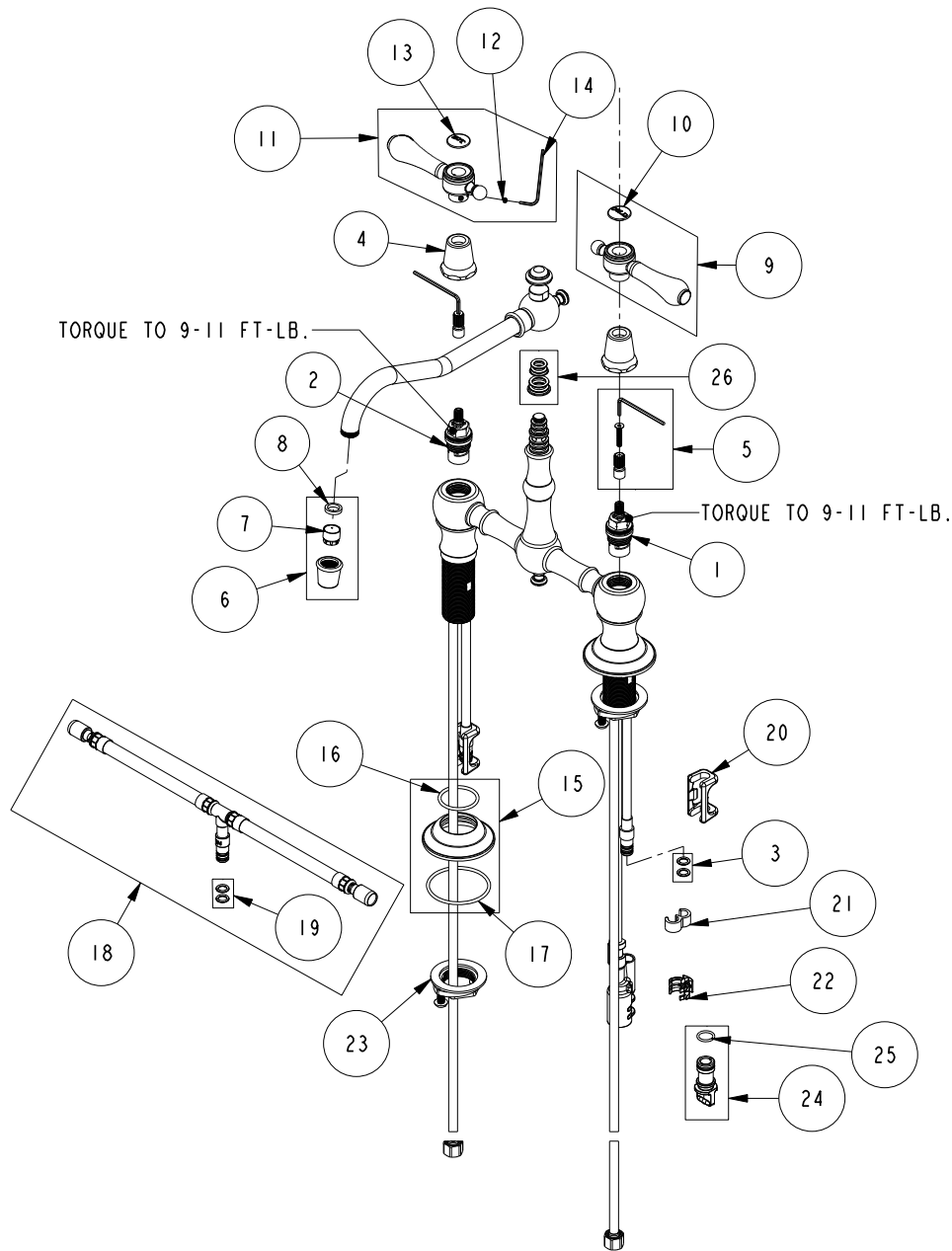


# REPLACEMENT PARTS



ITEM	PT/ASSY	SPECIFY FINISH	DESCRIPTION
1	1-005		C/S VALVE CARTRIDGE - COLD
2	1-006		C/S VALVE CARTRIDGE - HOT
3	1-399		O-RING KIT FOR SPOUT PEX CONECTION
4	12259	YES	HANDLE BONNET - TUB FILLER
5	10-304		CARTRIDGE STEM ADAPTER KIT
6	2-259	YES	AERATOR ASM
7	11917		AERATOR INSERT TT, 1.75 GPM
8	91265		WSHR, 11 ID X 15 OD X 2.8 MM THK, FLT, RUBBER NSF 61 APPR
9	2-133	YES	HANDLE ASSEMBLY - COLD
10	1-107		COLD BUTTON ASSEMBLY W/ ADHESIVE
11	2-134	YES	HANDLE ASSEMBLY - HOT
12	92000		SCREW 8 - 32 X 1/8 SS
13	1-108		HOT BUTTON ASSEMBLY W/ ADHESIVE
14	10192		HEX KEY TOOL, #8 5/64
15	20-701	YES	ESCUTCHEON ASM.
16	91305		O-RING, #2- 124, EPDM, 65-75 DURO, NSF 61
17	91752		O-RING, #2- 137, EPDM, 50 DURO
18	1-777		TEE HOSE ASSY
19	1-399		O-RING KIT FOR SPOUT PEX CONECTION
20	91568		RETAINER CLIP
21	91811		TEE HOSE CLIP
22	91812		DIVERTER CLIP
23	1-393		1-1/8 18 UNEF MOUNTING KIT
24	10-325		DIVERTER PLUG KIT
25	91019		O-RING, #2- 014, EPDM, 65-75 DURO, NSF 61
26	10-302		SPOUT O-RING AND WASHER KIT

KITCHEN BRIDGE FAUCET W/ SPRAY  
9461

REV G EN-4806 04/16/24 APPROVED KN

**NEWPORT BRASS.**

t: 949.417.5207 | www.newportbrass.com