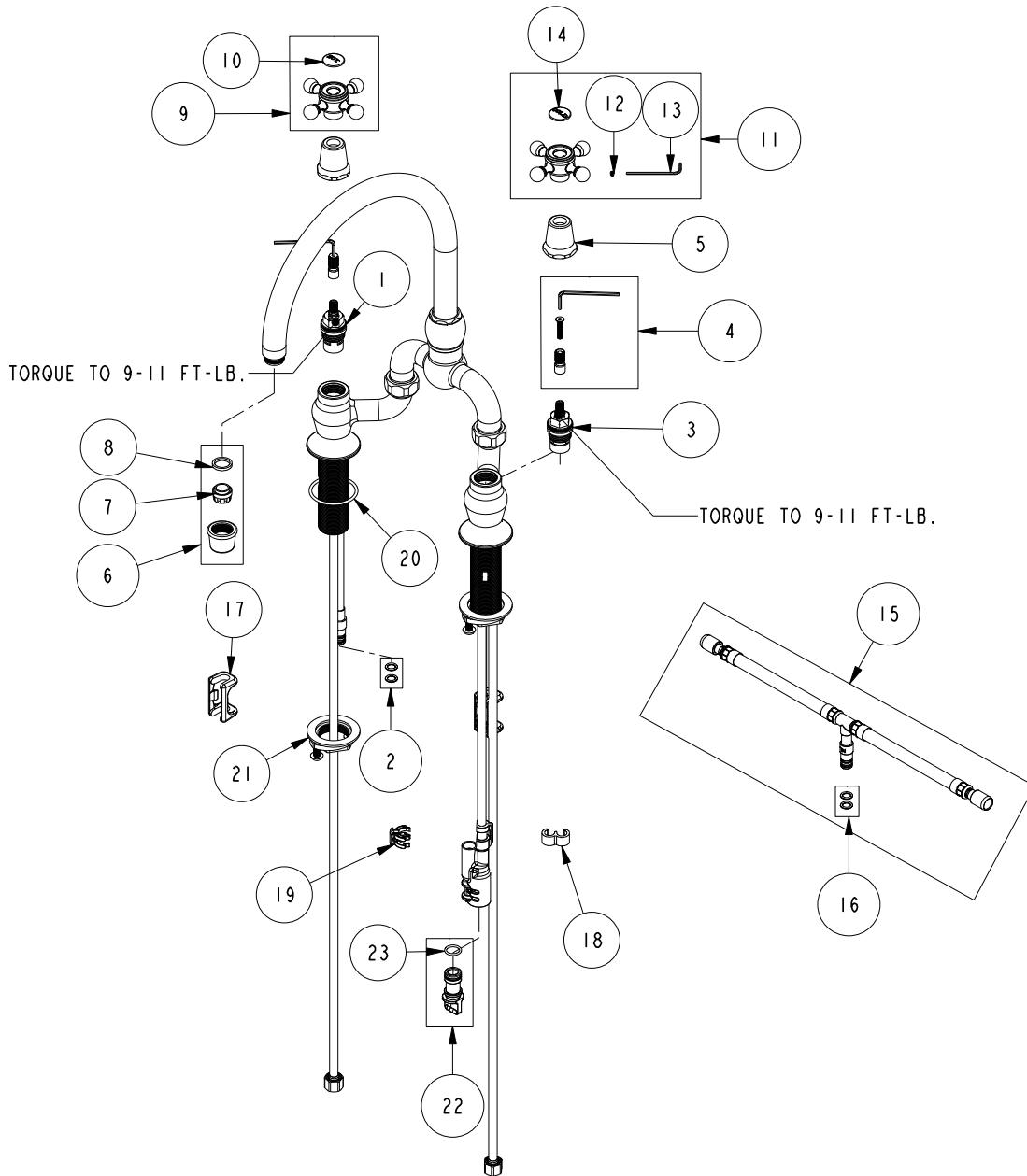


# REPLACEMENT PARTS



ITEM	PT/ASSY	SPECIFY FINISH	DESCRIPTION
1	1-006		C/S VALVE CARTRIDGE - HOT
2	1-399		O-RING KIT FOR SPOUT PEX CONECTION
3	1-005		C/S VALVE CARTRIDGE - COLD
4	10-304		CARTRIDGE STEM ADAPTER KIT
5	12259	YES	HANDLE BONNET - TUB FILLER
6	2-964	YES	AERATOR ASSEMBLY
7	11916		AERATOR JR. INSERT-1.8 GPM
8	91500		GSKT, .578 ID X .728 OD X .102 THK EPDM
9	2-141	YES	HANDLE ONLY, HOT
10	1-108		HOT BUTTON ASSEMBLY W/ ADHESIVE
11	2-142	YES	HANDLE ONLY, COLD
12	92000		SCREW 8 - 32 X 1/8 SS
13	10192		HEX KEY TOOL, #8 5/64
14	1-107		COLD BUTTON ASSEMBLY W/ ADHESIVE
15	1-777		TEE HOSE ASSY
16	1-399		O-RING KIT FOR SPOUT PEX CONECTION
17	91568		RETAINER CLIP
18	91811		TEE HOSE CLIP
19	91812		DIVERTER CLIP
20	91768		O-RING, #2-130, EP, 50 DURO - GREY
21	1-393		1-1/8 18 UNEF MOUNTING KIT
22	10-325		DIVERTER PLUG KIT
23	91019		O-RING, #2- 014, EPDM, 65-75 DURO, NSF 61

**KITCHEN BRIDGE FAUCET**  
**9464**

REV L EN-4806 04/15/24 APPROVED RS

**NEWPORT BRASS.**

t: 949.417.5207 | www.newportbrass.com