

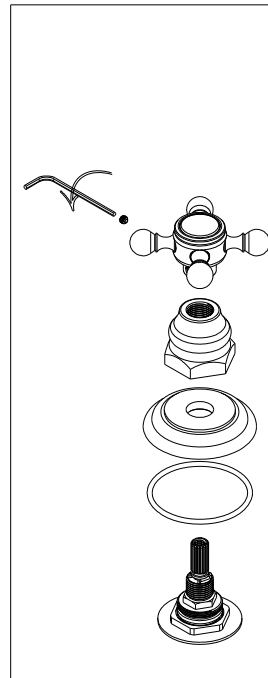
NEWPORT BRASS

Flawless Beauty. From Faucet to Finish.

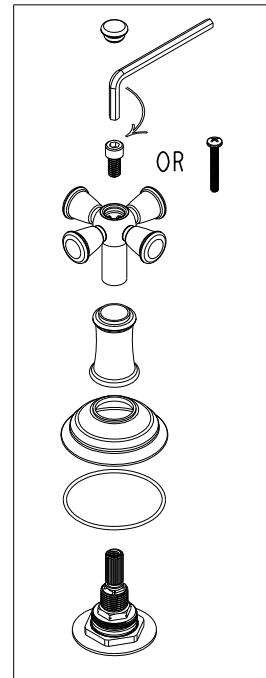
INSTALLATION INSTRUCTIONS INSTRUCCIONES DE INSTALACIÓN

HANDLES MANIJAS

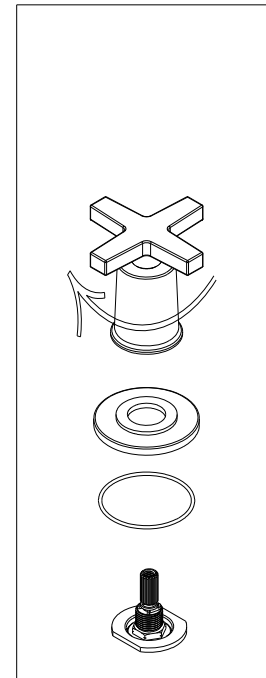
SIDE SCREW
TORNILLO LATERAL



TOP SCREW
TORNILLO SUPERIOR



NO SCREW
SIN TORNILLO



REPRESENTATIVE IMAGE SHOWN IDENTIFY YOUR PRODUCT
IMAGEN REPRESENTATIVA MOSTRADA IDENTIFIQUE SU PRODUCTO

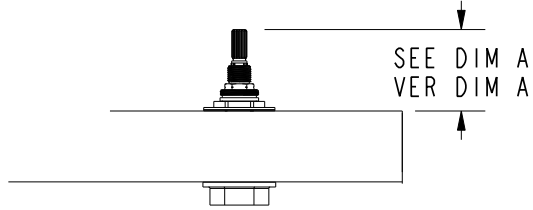
RECOMMEND INSTALLATION BY A PROFESSIONAL PLUMBING CONTRACTOR
RECOMIENDE LA INSTALACIÓN A UN CONTRATISTA DE PLOMERÍA PROFESIONAL

NOTE: THE USE OF PETROLEUM BASE PLUMBERS PUTTY ON OUR PRODUCTS WILL NULLIFY THE WARRANTY.
WE RECOMMEND THE USE OF CLEAR SILICONE SEALING MATERIALS.
NOTA: EL USO DE MASILLA DE PLOMERÍA A BASE DE PETRÓLEO EN NUESTROS PRODUCTOS ANULARÁ LA GARANTÍA.
RECOMENDAMOS EL USO DE MATERIALES DE SELLADO DE SILICONA TRANSPARENTE.

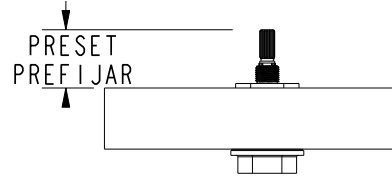
DECK MOUNT
MONTAJE EN CUBIERTA

SEE DECK LAV VALVE INSTALL
VER INSTALACIÓN DE LA VÁLVULA DE LAVADO DE CUBIERTA

SIDE SCREW AND TOP SCREW HANDLE
TORNILLO LATERAL Y MANGO DE TORNILLO SUPERIOR

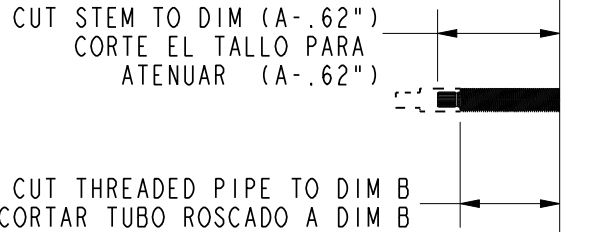
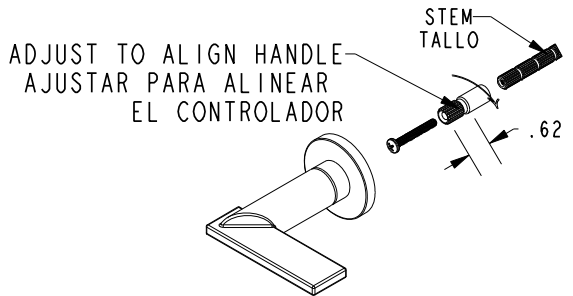


NO SCREW HANDLE
SIN MANGO DE TORNILLO



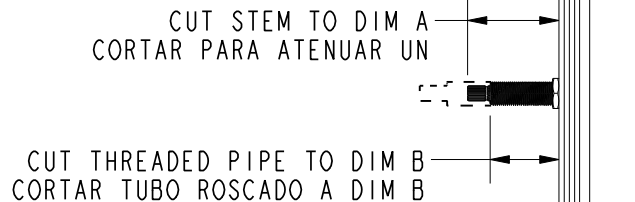
WALL MOUNT
MONTAJE EN PARED

SEE WALL MOUNT VALVE INSTALL
CONSULTE LA INSTALACIÓN DE LA VÁLVULA DE MONTAJE EN PARED



SHOWER PLATE MOUNT
SOPORTE PARA PLATO DE DUCHA

SEE BALANCED PRESSURE VALVE INSTALL
CONSULTE LA INSTALACIÓN DE LA VÁLVULA DE PRESIÓN EQUILIBRADA



COLLECTION NAME*	DIMENSION		COLLECTION NAME*	DIMENSION	
	A	B		A	B
ALEXANDRIA	2.37	1.75			
ALVESTON	2.20	1.62			
AMISA	2.37	1.80			
ASTOR	2.20	1.60			
AYLESBURY	2.00	1.37			
BEVELLE	2.20	1.70			
CHESTERFIELD	2.20	1.60			
CLEMENS	1.50	0.75			
DORRANCE	1.37	0.75			
EAST LINEAR	2.00	1.37			
EAST SQUARE	2.00	1.37			
FAIRFIELD	2.20	1.60			
GRIFFEY	1.45	0.62			
ITHACA	1.50	0.50			
JACOBAN	2.00	1.37			
JOFFREY	1.42	0.50			
KEATON	1.25	0.50			
KIRSI	1.25	0.50			
MALVINA	1.42	0.68			
METRO	1.37	0.50			
METROPOLE	2.00	1.50			
MIRO	2.25	1.62			
MUNCY	1.37	0.62			
PARDEES	1.37	0.62			
PAVANI	1.25	0.50			
PRIYA	1.25	0.50			
SEAPORT	2.50	1.87			
SECANT	1.37	0.75			
SKYLAR	1.37	0.75			
SLATER	2.00	1.37			
SUTTON	2.00	1.25			
TAFT	1.37	0.75			
TOLMIN	1.37	0.62			
VANDER	1.50	0.62			
VICTORIA	1.87	1.15			

*SEE CARTON LABEL FOR COLLECTION NAME