

NEWPORT SHOWER

Features

Solid brass construction
2-3/8" flange diameter with o-ring retainer

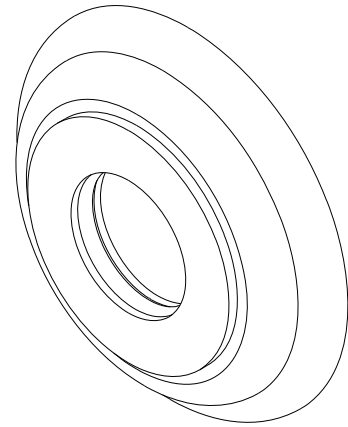
SHOWER ARM FLANGE


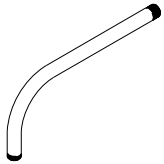
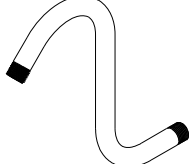
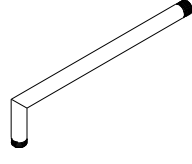
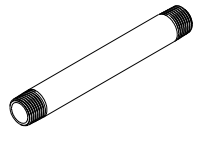
2-332

Codes / Standards Compliance

Meets or exceeds the following at date of manufacture:

All applicable US Federal and State material regulations



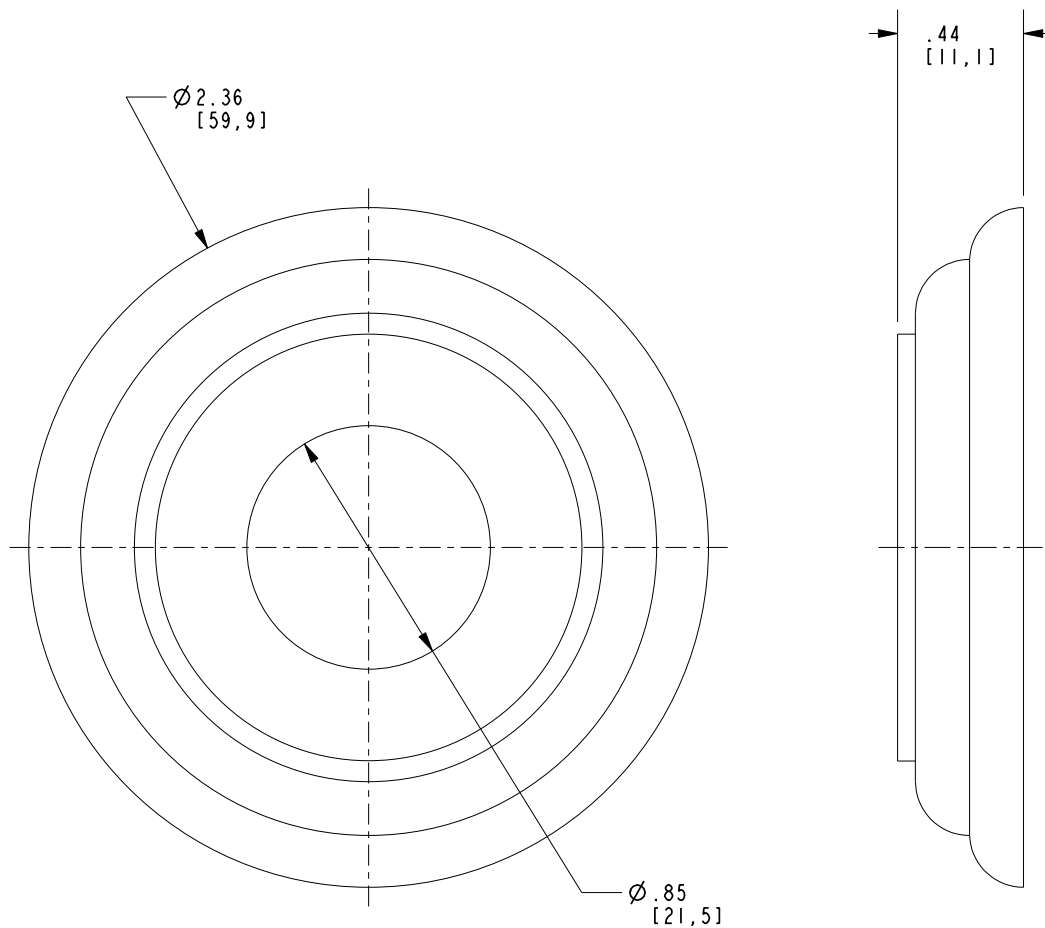
ACCESSORY OPTIONAL					
Description	Shower Arm	Shower Arm	Shower Arm	Shower Arm	Shower Arm
Inlet/Outlet Size	1/2" / 1/2"	1/2" / 1/2"	1/2" / 1/2"	1/2" / 1/2"	1/2" / 1/2"
Part Number	200	202	205	202-1	200-71XX
Image					

*Refer to the Newport Brass catalog for additional options.

2-332

PRODUCT DIMENSIONS (Units are in inches)

Product Dimensions are provided for reference only. For specific product installation guidelines, please reference the Installation Instructions of the product being installed.



SHOWER ARM FLANGE

2-332

Page 2 of 2
EN- 4858
REVA

NEWPORT BRASS
Flawless Beauty. From Faucet to Finish.

t: 949.417.5207 | www.newportbrass.com
©2024 Brasstech, Inc.