

NEWPORT SHOWER

Features

Solid brass construction
2-1/2" square flange with o-ring retainer
Intended for use with Newport Brass 3/4" Shower Arms

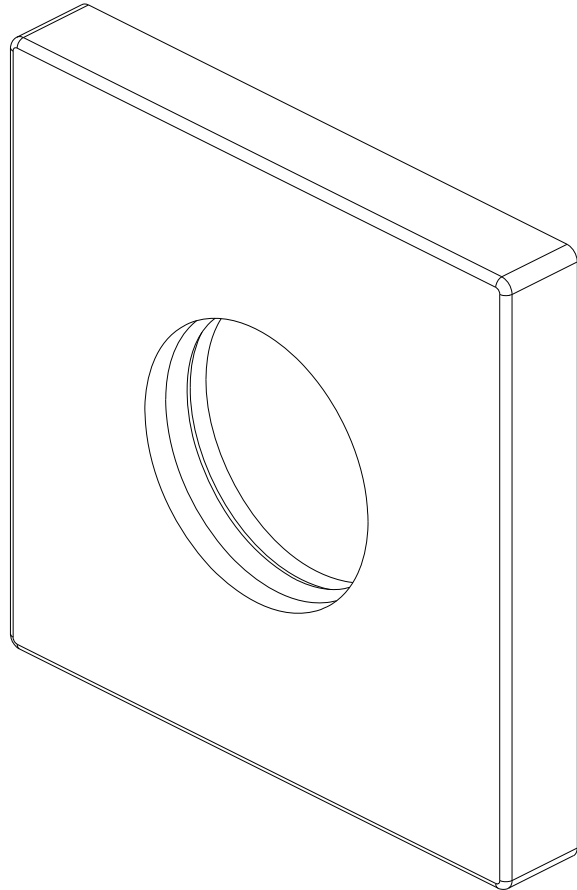
SHOWER ARM FLANGE

206-301

Codes / Standards Compliance

Meets or exceeds the following at date of manufacture:

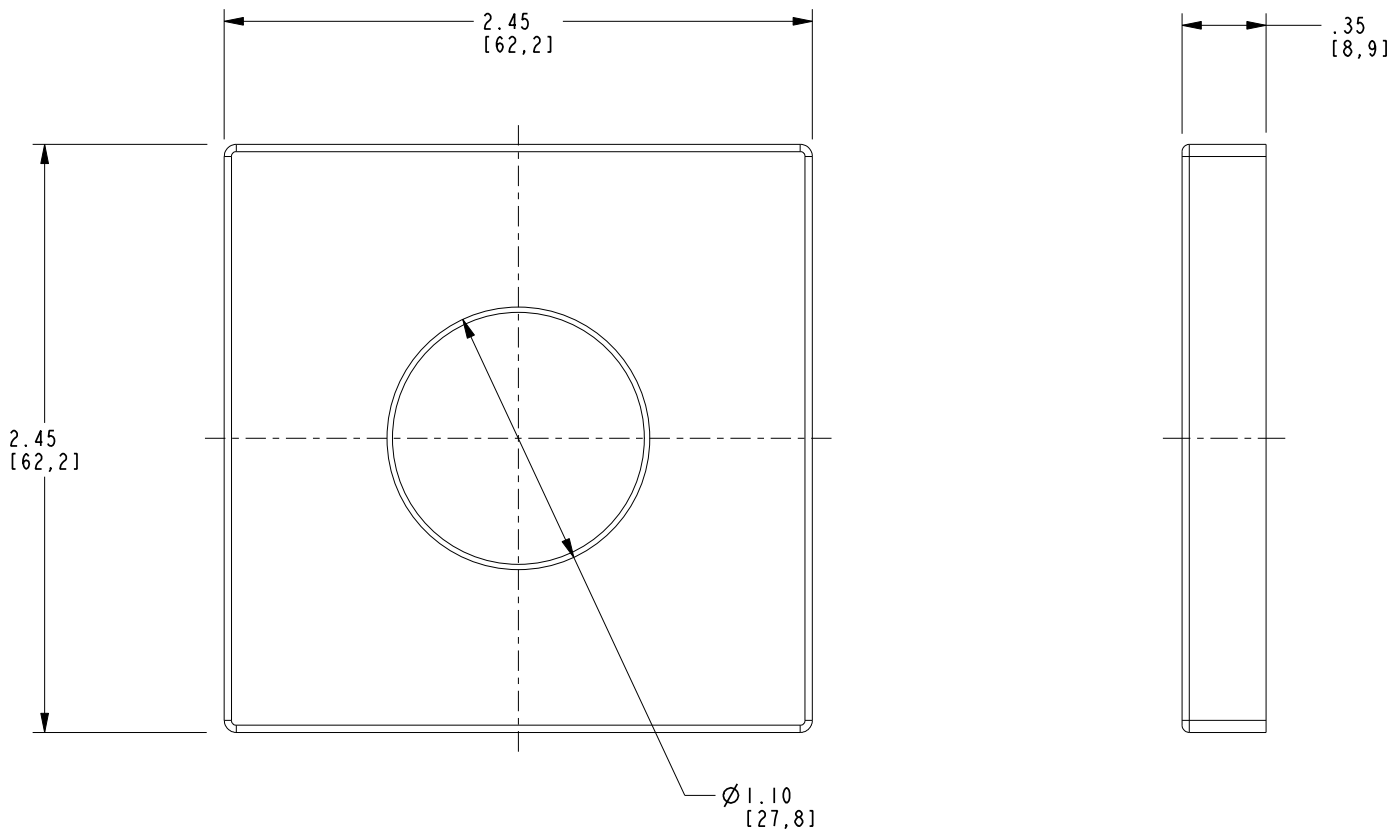
All applicable US Federal and State material regulations



206-301

PRODUCT DIMENSIONS *(Units are in inches)*

Product Dimensions are provided for reference only. For specific product installation guidelines, please reference the Installation Instructions of the product being installed.



SHOWER ARM FLANGE

206-301

Page 2 of 2
EN- 4858
REVA

NEWPORT BRASS
Flawless Beauty. From Faucet to Finish.

t: 949.417.5207 | www.newportbrass.com
©2024 Brasstech, Inc.